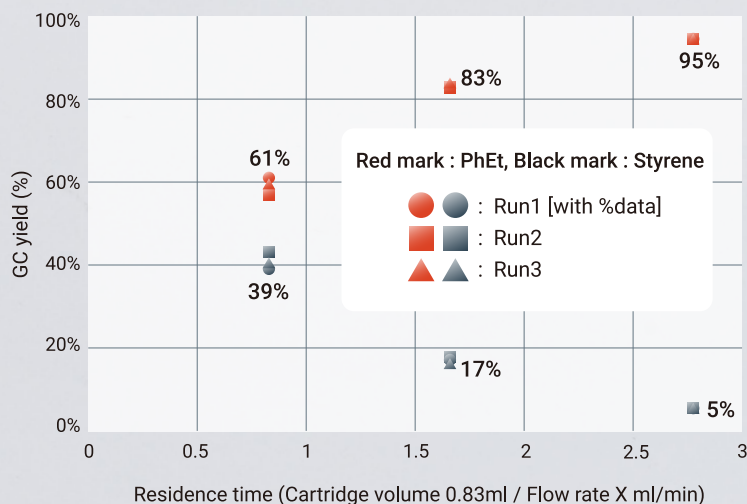


These catalyst cartridges are designed for continuous flow reaction and are packed with a spherical form catalyst with low pressure loss.

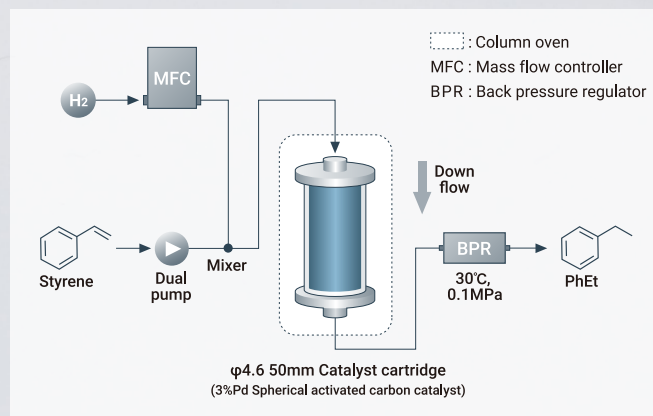


Test results of the catalyst cartridges

■ The results of repeatability for 3%Pd Spherical activated carbon catalyst cartridge.



■ Scheme of the continuous flow reaction



(Source : Kawaken Fine Chemicals Co.,Ltd.)

FC-CC-KF Series

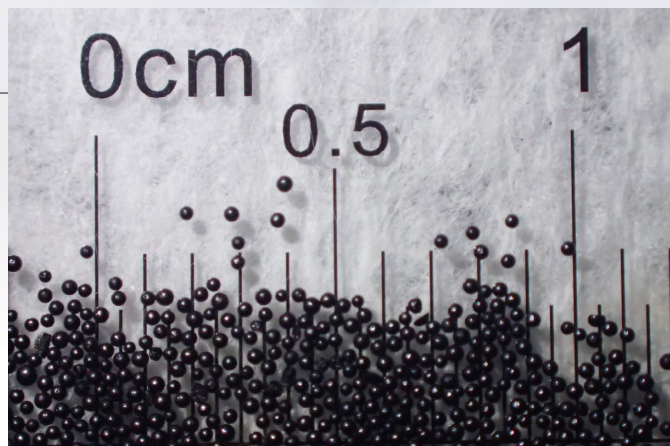
Catalyst Cartridge for Continuous Flow Reaction



Spherical activated carbon catalysts

These catalysts are made by supporting precious metals such as palladium and platinum on spherical activated carbon with low pressure loss. These are ideal for various hydrogenation reactions.

- ▶ **Metal types** : Pd (3%) , Pt (3%) , Rh (2%)
- ▶ **Bulk density** : 0.6 g / mL
- ▶ **Particle size** : ϕ 0.3 mm



Spherical activated carbon catalysts (ϕ 0.3 mm)

(Source : Kawaken Fine Chemicals Co.,Ltd.)

Product List (Catalysts : Kawaken Fine Chemicals Co.,Ltd.)

Products	Product number	Size (Inner diameter × Length)
3%Pd Spherical activated carbon catalyst cartridge	FC-CC-KF-Pd3-4650	I.D. 4.6mm × L 50mm
	FC-CC-KF-Pd3-46100	I.D. 4.6mm × L 100mm
	FC-CC-KF-Pd3-46150	I.D. 4.6mm × L 150mm
	FC-CC-KF-Pd3-10050	I.D. 10mm × L 50mm
	FC-CC-KF-Pd3-100100	I.D. 10mm × L 100mm
	FC-CC-KF-Pd3-100150	I.D. 10mm × L 150mm
3%Pt Spherical activated carbon catalyst cartridge	FC-CC-KF-Pt3-4650	I.D. 4.6mm × L 50mm
	FC-CC-KF-Pt3-46100	I.D. 4.6mm × L 100mm
	FC-CC-KF-Pt3-46150	I.D. 4.6mm × L 150mm
	FC-CC-KF-Pt3-10050	I.D. 10mm × L 50mm
	FC-CC-KF-Pt3-100100	I.D. 10mm × L 100mm
	FC-CC-KF-Pt3-100150	I.D. 10mm × L 150mm
2%Rh Spherical activated carbon catalyst cartridge	FC-CC-KF-Rh2-4650	I.D. 4.6mm × L 50mm
	FC-CC-KF-Rh2-46100	I.D. 4.6mm × L 100mm
	FC-CC-KF-Rh2-46150	I.D. 4.6mm × L 150mm
	FC-CC-KF-Rh2-10050	I.D. 10mm × L 50mm
	FC-CC-KF-Rh2-100100	I.D. 10mm × L 100mm
	FC-CC-KF-Rh2-100150	I.D. 10mm × L 150mm

DFC
Device for Flow Chemistry

DFC Co., Ltd. Device for Flow Chemistry

611-0033 Uji Venture Business Incubation Factory (Uji VFI) Building 2
1-25 Nishinohata, Okubo-cho, Uji-shi, Kyoto
E-mail. info@dfc-kyoto.co.jp



<https://dfc-kyoto.co.jp>

Business Description

- Development and sales of laboratory equipment

Fields of Expertise

- Flow chemistry
- Liquid chromatography and HPLC
- Laboratory equipment for other applications